

### **LED Shallow wide batten luminaire range**

RDW971 series surface mounted LED Shallow Wide Batten, slim design with white or black body, opal diffuser and integral electronic LED driver.

### **LED Shallow Wide Batten series designed with various lumen packages:**

|                            |  |
|----------------------------|--|
| <b>Watt:</b>               | 20W up to 50W  |
| <b>Colour Temperature:</b> | <b><u>Switchable:</u></b> 3000K/ 4000K / 5700K         |
| <b>CRI:</b>                | CRI80+   |
| <b>Lamp's life time:</b>   | 50,000Hrs L70 / B10 at 25 °C                           |
| <b>Beam Angle:</b>         | 110 °  |
| <b>LED Driver:</b>         | Integral Non-dimmable, Triac Dimmable or DALI Dimmable |
| <b>Colour Finish:</b>      | White or Black   |
| <b>IP Rating:</b>          | IP20   |

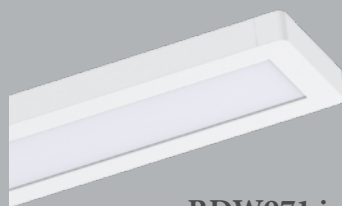
### **Applications:**

Commercial and Residential applications. Schools, Offices, Storage rooms, Foyer.

Lumen output based on Absolute lumens, 4000K LED chip and manufacturers rated mA drivers.

\*\*\* NOTE: Dimensions and Cut Out sizes may change without notification.

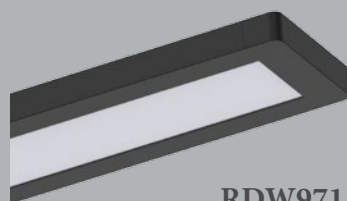
## Rytec Lighting Australia Pty Ltd



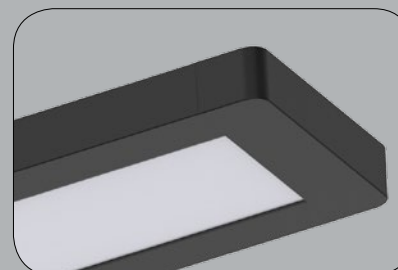
**RDW971 in White Finish**



| Cat         | System Watt | Colour Temperature      | White Body Luminaire Lumen | Size L x W x H  | CRI |
|-------------|-------------|-------------------------|----------------------------|-----------------|-----|
| RDW971/W-20 | 20W         | 3000K<br>4000K<br>5700K | 2549<br>2693<br>2662       | 550 x 160 x 35  | 80+ |
| RDW971/W-30 | 30W         | 3000K<br>4000K<br>5700K | 3704<br>3985<br>3987       | 850 x 160 x 35  | 80+ |
| RDW971/W-40 | 40W         | 3000K<br>4000K<br>5700K | 5375<br>5661<br>5593       | 1150 x 160 x 35 | 80+ |
| RDW971/W-50 | 50W         | 3000K<br>4000K<br>5700K | 6415<br>7032<br>6931       | 1450 x 160 x 35 | 80+ |



**RDW971 in Black Finish**



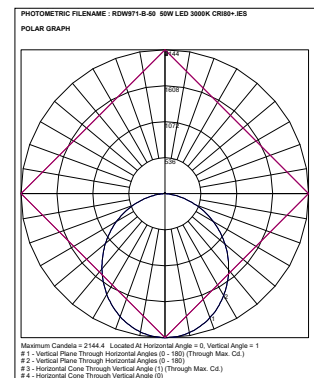
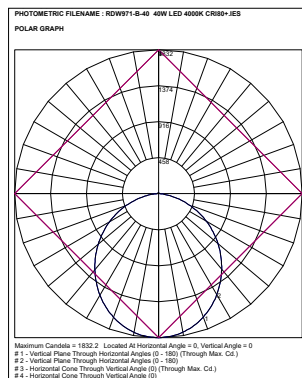
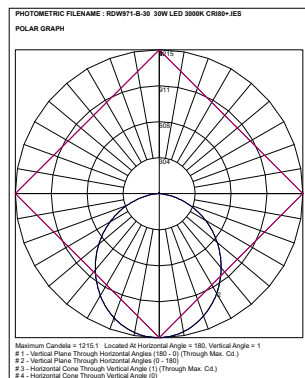
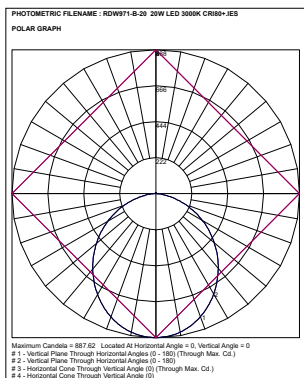
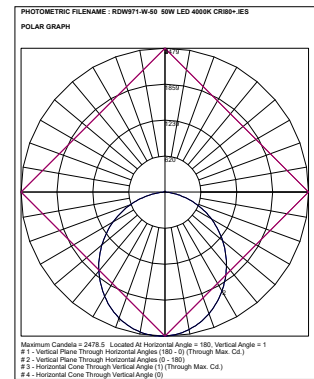
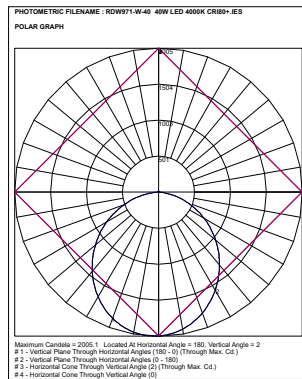
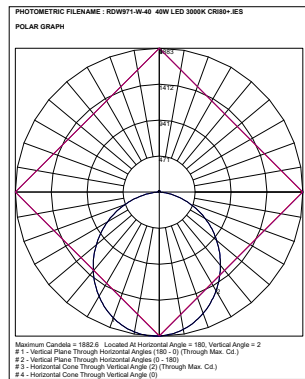
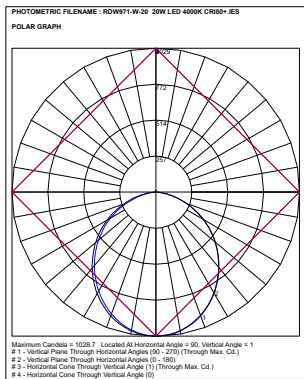
| Cat         | System Watt | Colour Temperature      | Black Body Luminaire Lumen | Size L x W x H  | CRI |
|-------------|-------------|-------------------------|----------------------------|-----------------|-----|
| RDW971/B-20 | 20W         | 3000K<br>4000K<br>5700K | 2296<br>2423<br>2393       | 550 x 160 x 35  | 80+ |
| RDW971/B-30 | 30W         | 3000K<br>4000K<br>5700K | 3154<br>3397<br>3442       | 850 x 160 x 35  | 80+ |
| RDW971/B-40 | 40W         | 3000K<br>4000K<br>5700K | 4502<br>4791<br>4780       | 1150 x 160 x 35 | 80+ |
| RDW971/B-50 | 50W         | 3000K<br>4000K<br>5700K | 5598<br>6009<br>6067       | 1450 x 160 x 35 | 80+ |

Lumen output based on Absolute lumens, 4000K LED chip and manufacturers rated mA drivers.

\*\*\* NOTE: Dimensions and Cut Out sizes may change without notification.

## Optional Extras

| Options                   | Suffix | Comments |
|---------------------------|--------|----------|
| Triac Dimmable LED driver | DM     | Integral |
| DALI Dimmable LED driver  | EBD    | Integral |

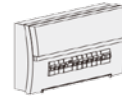


Lumen output based on Absolute lumens, 4000K LED chip and manufacturers rated mA drivers.

\*\*\* NOTE: Dimensions and Cut Out sizes may change without notification.

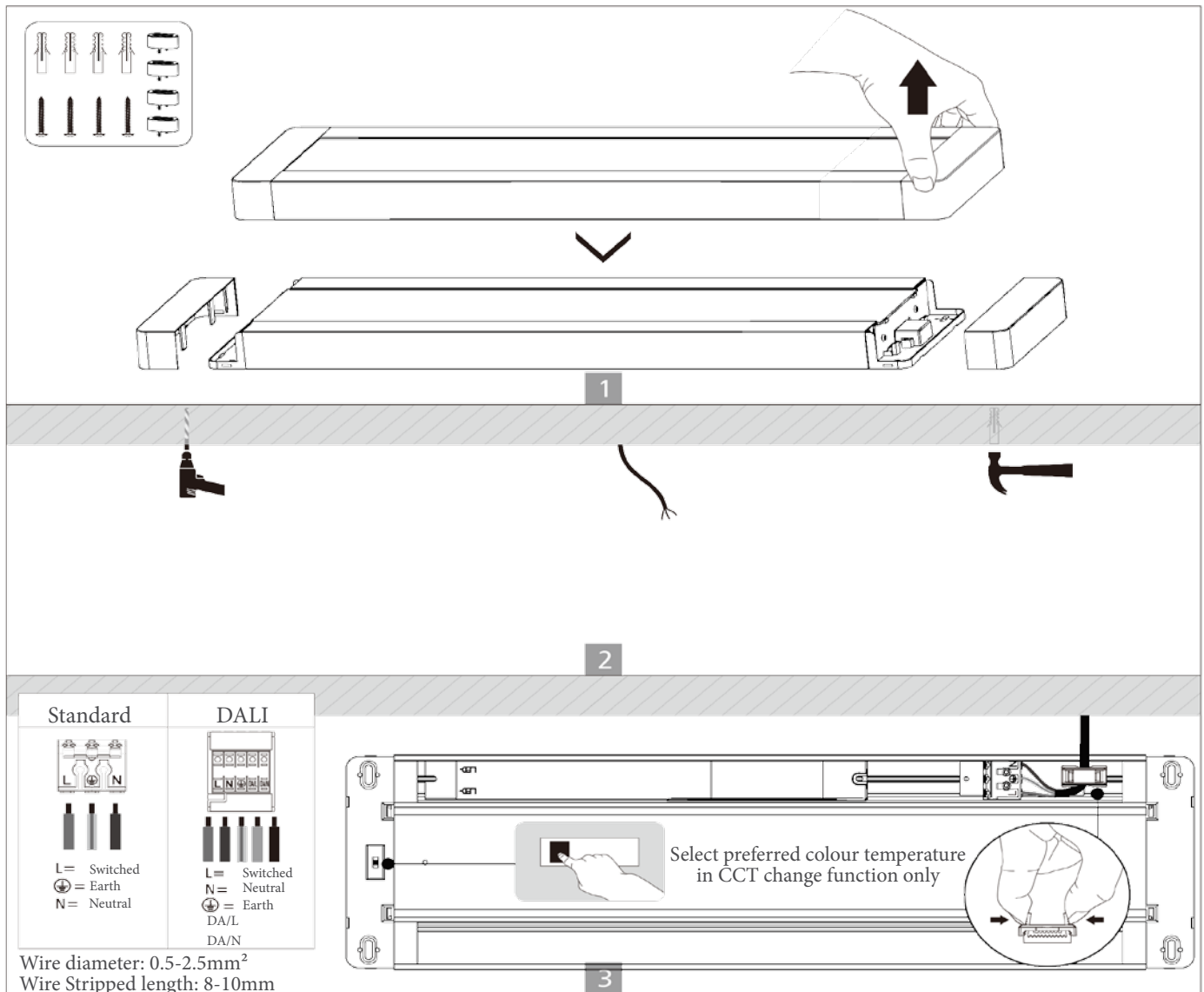
**WARNING** ⚡

- 1; Switch of power before installation.
- 2; Switch on power only, after installation is completed.
- 3; Professional electrician to do installation and maintenance.



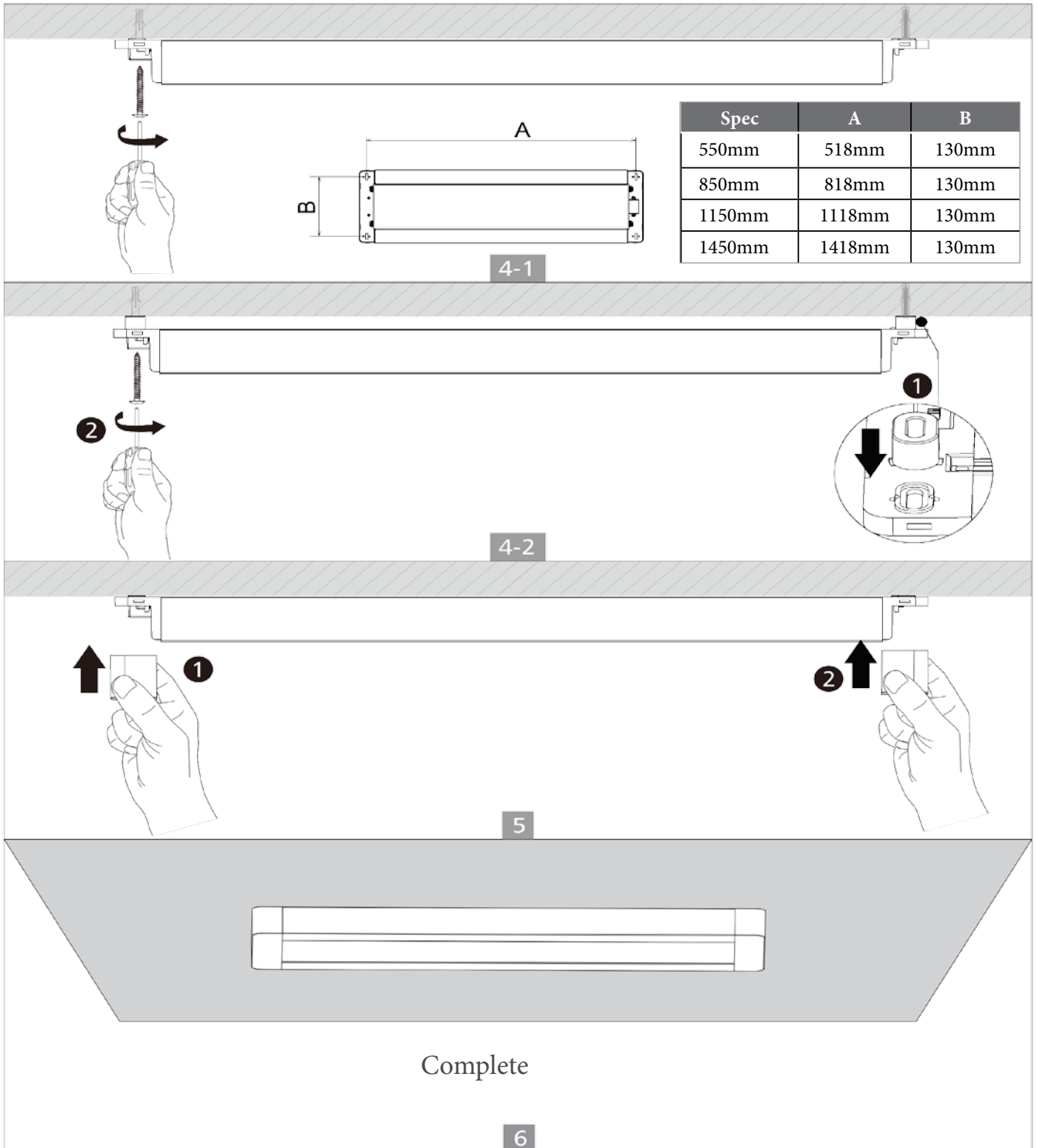
Turn Off  
Power Supply

**Surface mounting Installation**



Lumen output based on Absolute lumens, 4000K LED chip and manufacturers rated mA drivers.

\*\*\* NOTE: Dimensions and Cut Out sizes may change without notification.



Lumen output based on Absolute lumens, 4000K LED chip and manufacturers rated mA drivers.

\*\*\* NOTE: Dimensions and Cut Out sizes may change without notification.