

RLWL20 series IP65 Up & Down lighter LED wall lights with high efficacy LED chips and integral electronic LED driver.

LED lighting revolution and is making energy-wasting traditional lighting technologies obsolete through the use of energy efficient, environmentally friendly LED light.

RLWL20 series IP65 LED surface mounted luminaire designed with:

- Aluminium housing.
- Aluminium heat sink provides excellent thermal management
- IP65 rating.
- Up & Down lighter
- Adjustable beam angle

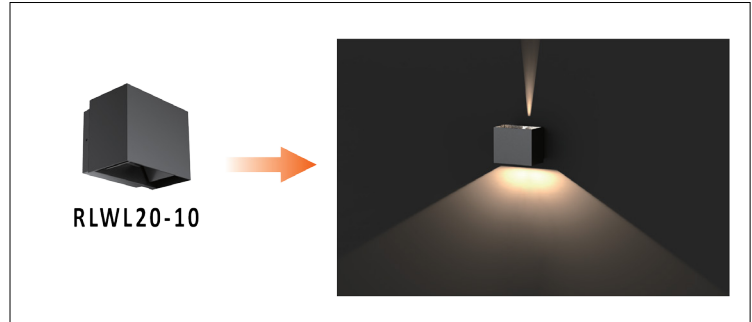
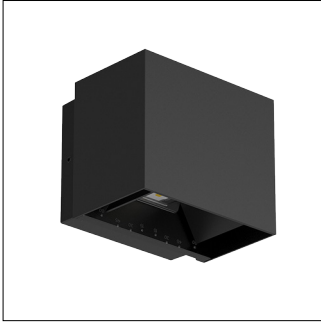
<b><u>LED:</u></b>	SMD2835
<b><u>Colour Temperature:</u></b>	3000K / 4000K / 5000K / 5700K
<b><u>Colour Rendering Index:</u></b>	CRI80+
<b><u>Lamp's Life Time:</u></b>	50,000Hrs L70 / B10 at 25 C°
<b><u>Beam Angle:</u></b>	Adjustable 15° to 120°
<b><u>Driver options:</u></b>	Integral non-dimmable
<b><u>IP Rating:</u></b>	IP65
<b><u>IK Rating:</u></b>	IK06
<b>Available Colour:</b>	Black

#### **Applications:**

Hospitals, Schools, Hotels, Shops, Supermarkets, Pathways, Factories and Aged Care Facilities.

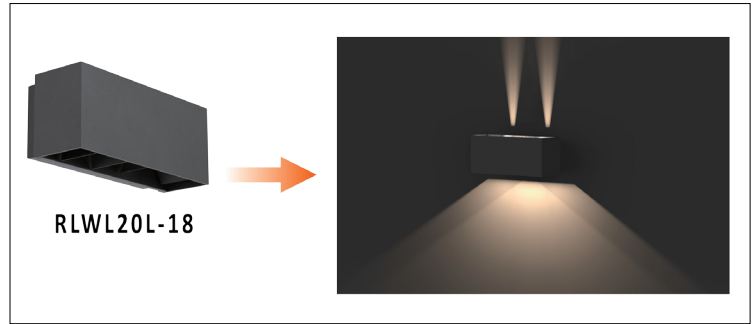
Lumen output based on Absolute lumens, 4000K LED chip and manufacturers rated mA drivers.

\*\*\* NOTE: Dimensions and Cut Out sizes may change without notification.



RLWL20-10

**RLWL20-10**



RLWL20L-18

**RLWL20L-18**

Cat	Watt	Colour Temperature	Lumen Output	CRI	Size Width x Height x Depth	IP
RLWL20-10	10W (2x5W)	3000K	433	80+	120 x 100 x 97	IP65
		4000K	489			
		5000K	457			
		5700K	462			
RLWL20L-18	18W (2x9W)	3000K	628	80+	242 x 100 x 98	IP65
		4000K	643			
		5000K	696			
		5700K	638			

Lumen output based on Absolute lumens, 4000K LED chip and manufacturers rated mA drivers.

\*\*\* NOTE: Dimensions and Cut Out sizes may change without notification.

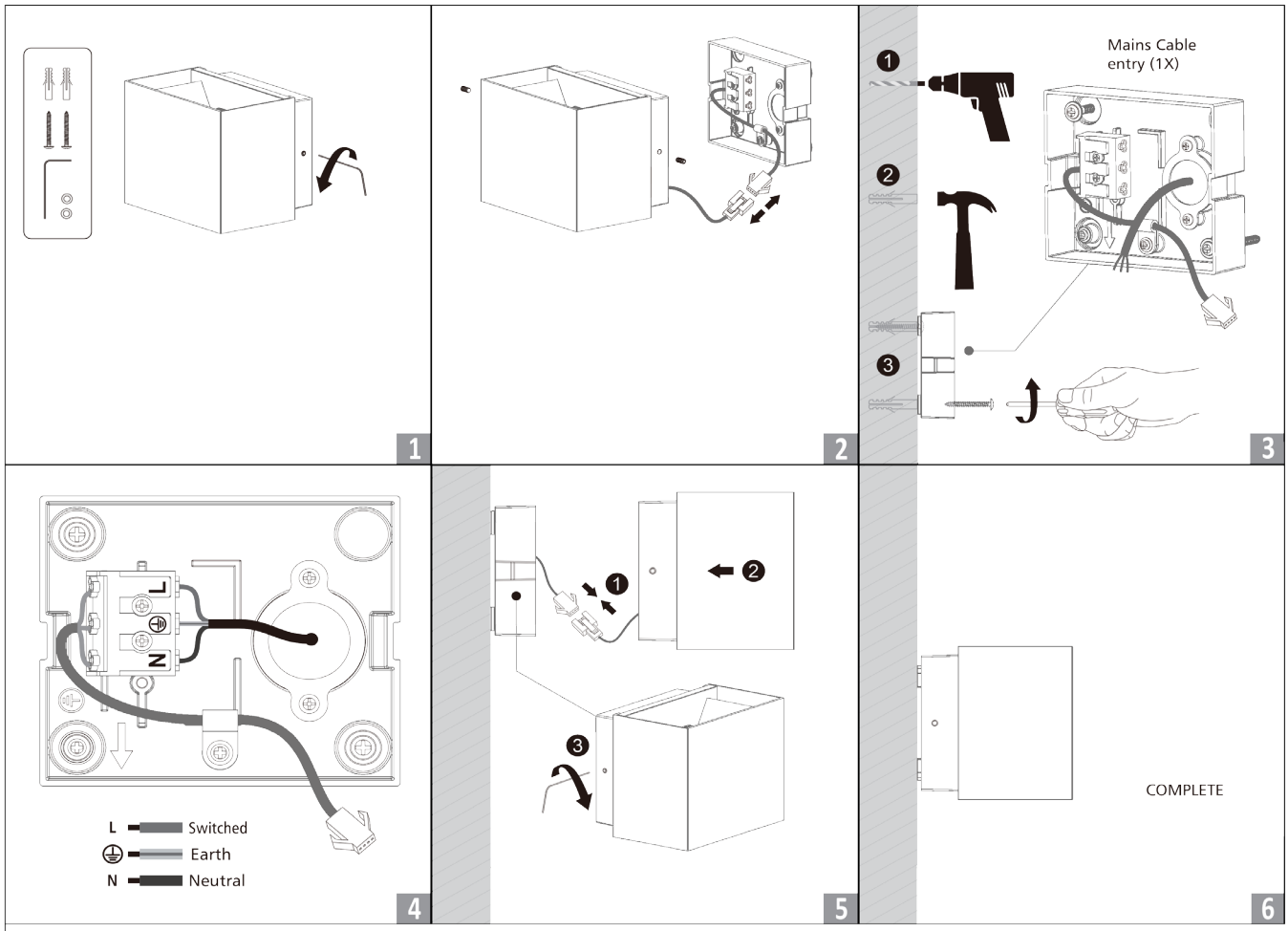
**Installation Instruction**

**WARNING**

1. Switch off before installation.
2. Switch on only after complete installation and examination of the circuit.
3. Professional electrician for installation and maintenance only.



**Wall mounted installation**



Lumen output based on Absolute lumens, 4000K LED chip and manufacturers rated mA drivers.

\*\*\* NOTE: Dimensions and Cut Out sizes may change without notification.