

RJSD series IP65 exterior LED wall lights with high efficacy LED chips and integral electronic LED driver. LED lighting revolution and is making energy-wasting traditional lighting technologies obsolete through the use of energy efficient, environmentally friendly LED light.

RJSD series IP65 LED wall mounted luminaire designed with:

- Die-cast aluminium housing with high corrosion resistance.
- High purity aluminium heat conduction piece,
- Tempered frosted glass diffuser,
- Silicon gasket for IP65 rating.
- Stainless steel fasteners.

<b><u>CRI:</u></b>	CRI80+
<b><u>Lamp's Life Time:</u></b>	50,000Hrs L70 / B10
<b><u>Driver options:</u></b>	Integral non-dimmable, DALI/DSI dimmable
<b><u>IP Rating:</u></b>	IP65
<b><u>Colour Temperature:</u></b>	4000K
<b><u>Available Colour:</u></b>	Black finish. Special colour finish available on request.

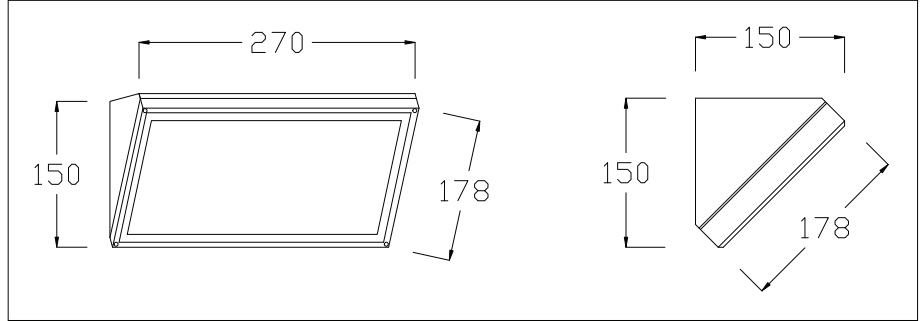
#### **Applications:**

Hospitals, Schools, Hotels, Shops, Supermarkets, Foyers, Factories and Canopies.

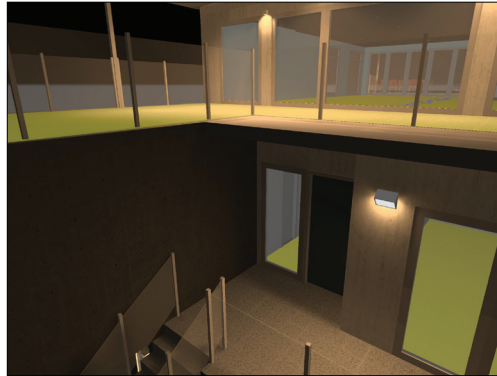
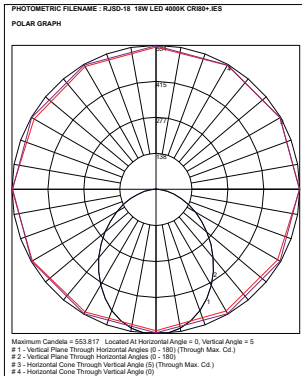
Lumen output based on Absolute lumens, 4000K LED chip and manufacturers rated mA drivers.

\*\*\* NOTE: Dimensions and Cut Out sizes may change without notification.

# Rytec Lighting Australia Pty Ltd



Cat	Watt	Colour Temperature	Lumen Output	CRI	Size W xH x D	IP
RJSD-18	18W	4000K	1317	80+	270 x 150 x 150	IP65



\*\*\* NOTE: Dimensions and Cut Out sizes may change without notification.